





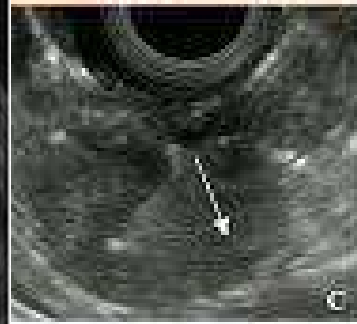
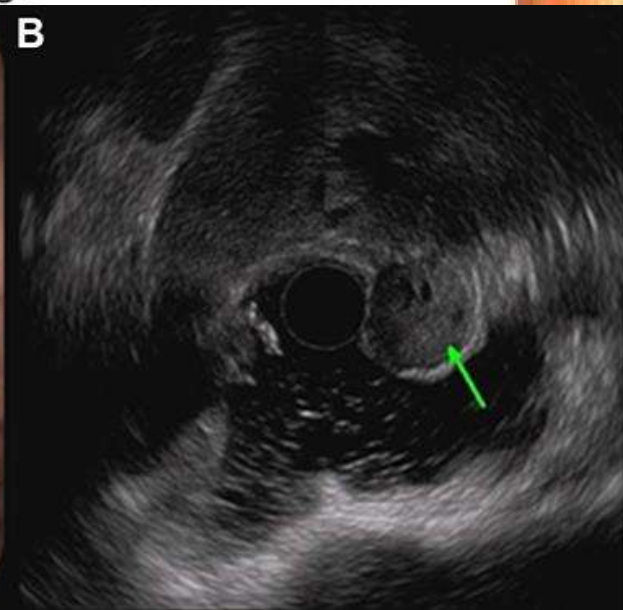
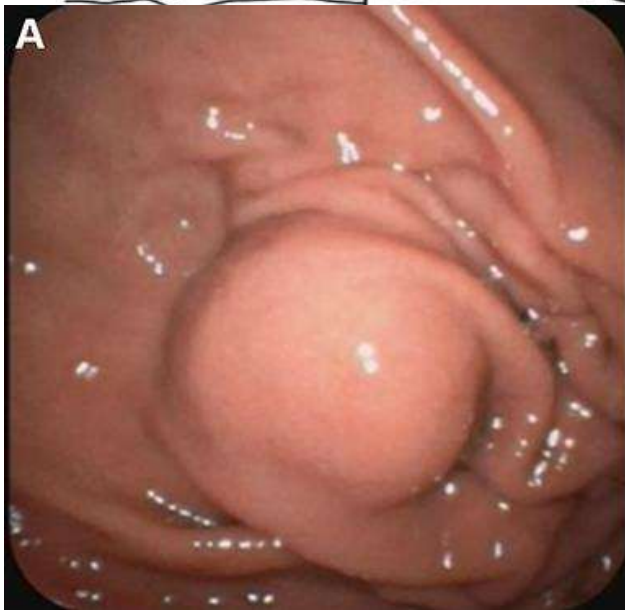
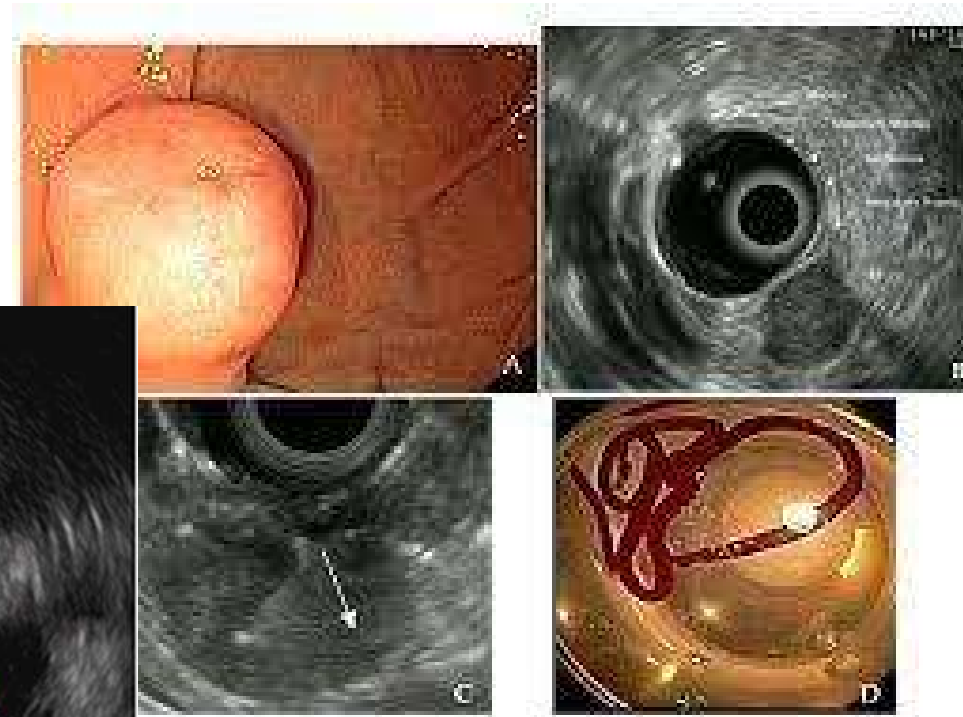
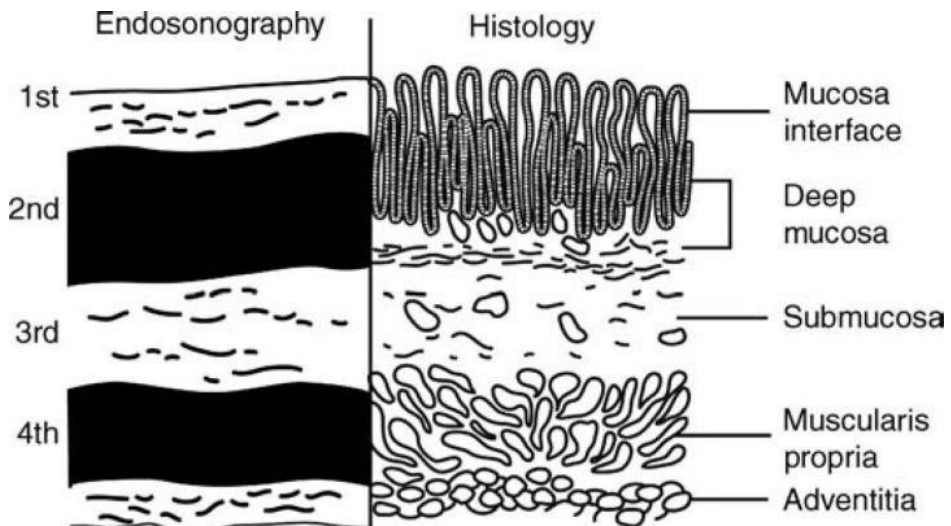


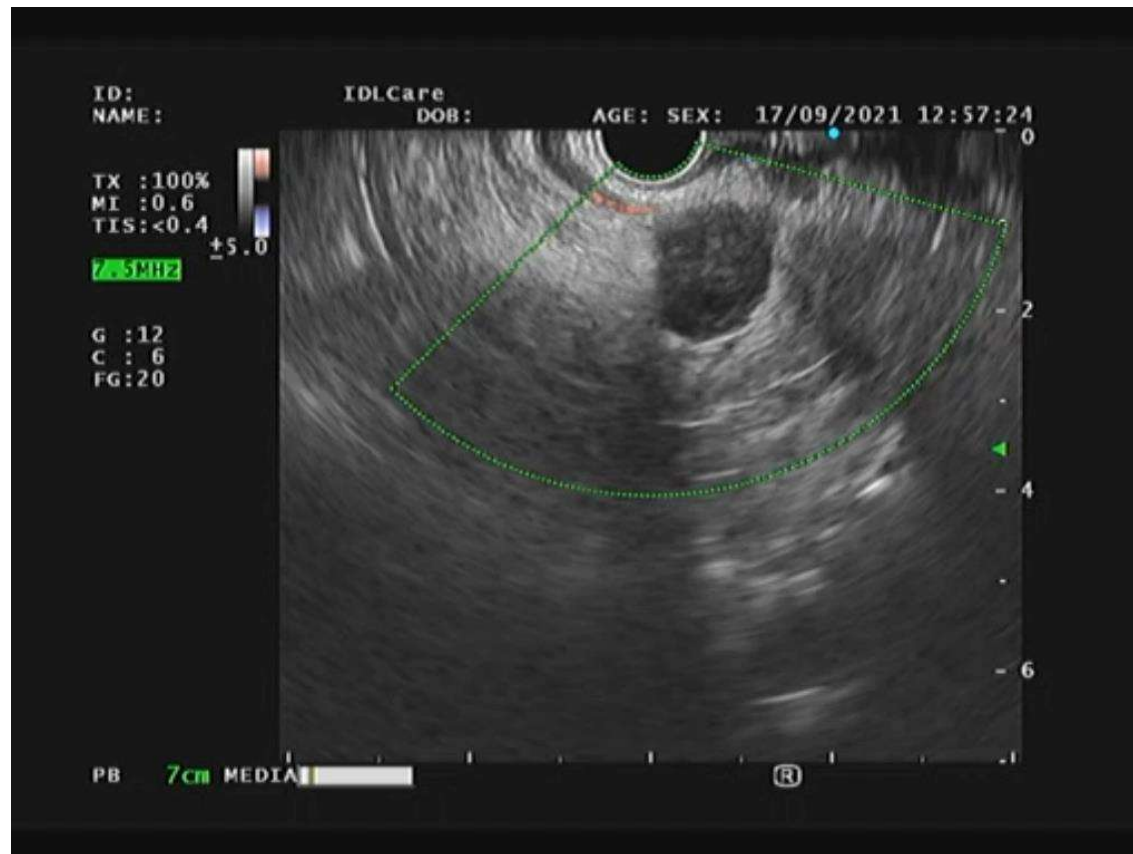
# EUS FNA needles

	EUS-TA					
EUS-FNA/FNB	EUS-FNA	EUS-FNB				
		1st-generation	2nd-generation	3rd-generation		
Needle	Various kinds of needles are commercially available	Tru-cut needle (Quick-Core)	Reverse bevel needle (ProCore)	Fork-tip needle (SharkCore)	Franseen needle (Acquire)	Forward-facing bevel needle (ProCore)
Corporation		Cook Endoscopy	Cook Endoscopy	Medtronic	Boston Scientific	Cook Endoscopy
Available needle size	19 – 25-gauge	19-gauge	19, 22, 25-gauge	19, 22, 25-gauge	22, 25-gauge	20-gauge
						

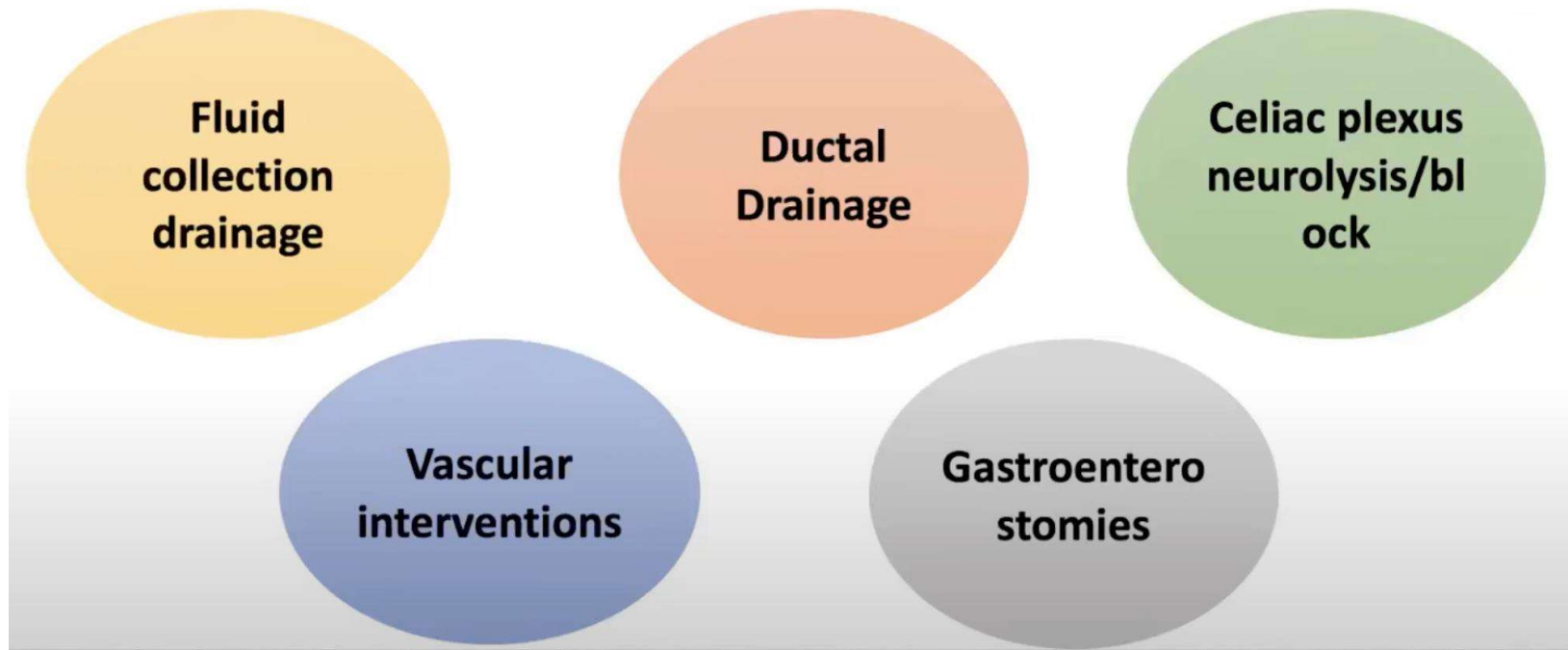
# Subepithelial tumours



# Pancreatic lesion FNAC

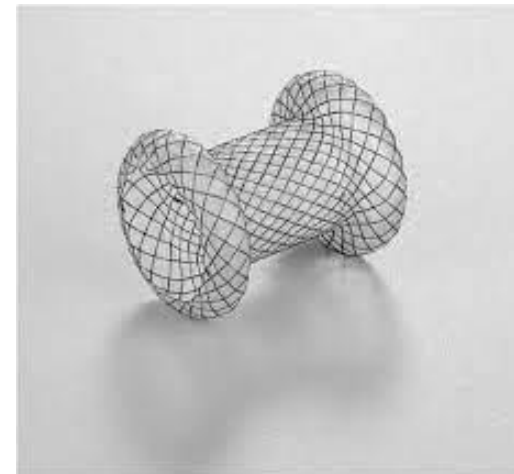
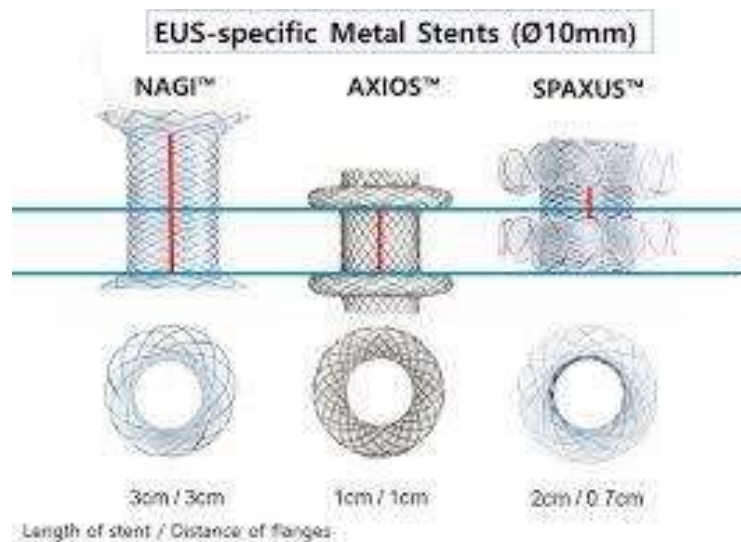


# Therapeutic indications



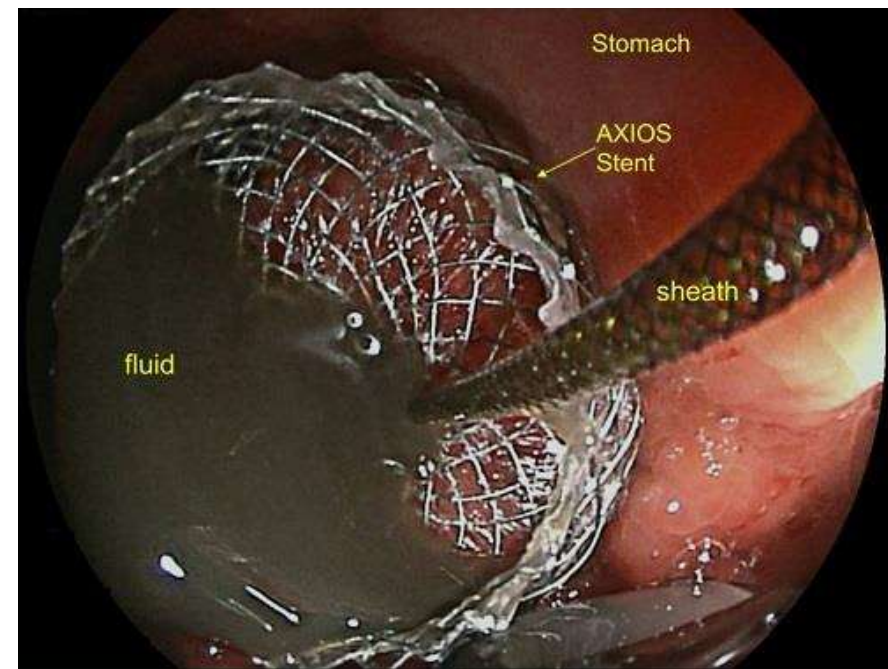
# Lumen apposing metal stents ( LAMS)

- Axios stent
- Spaxus
- NAGI ( Partial lumen apposing)

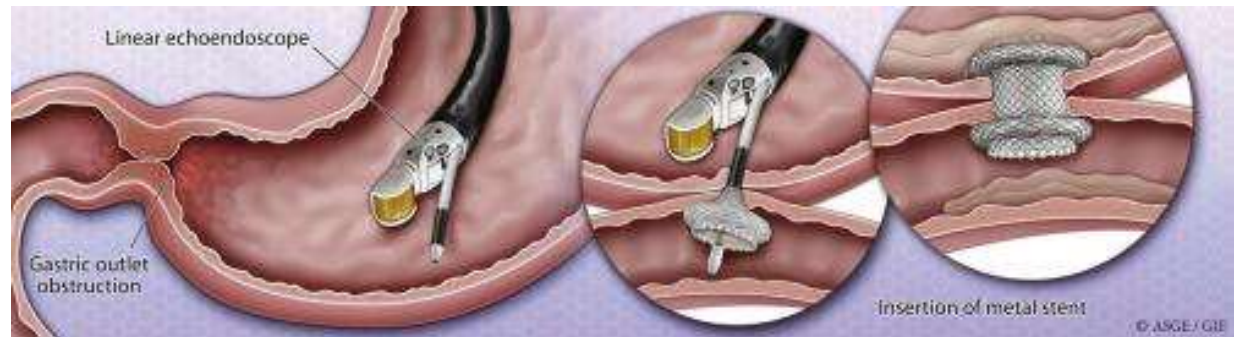
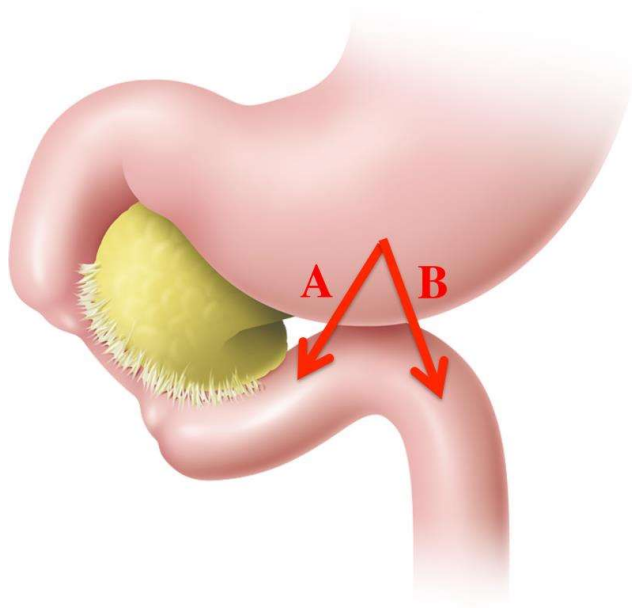




# Pseudocyst drainage

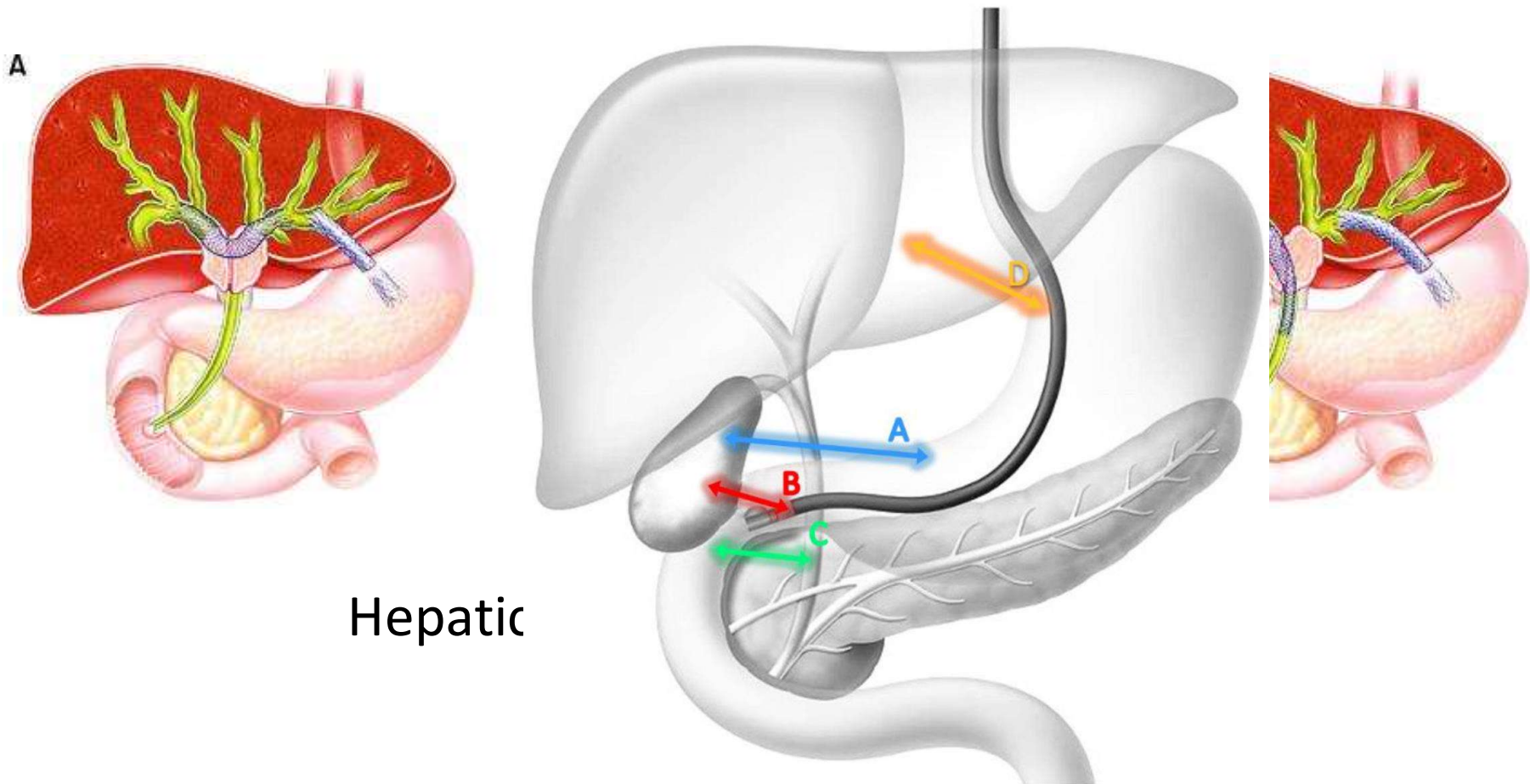


# Gastrojejunostomy





# EUS guided biliary drainage



# Gastric Variceal coiling



## Adverse events

- **Diagnostic EUS: safe procedure**
- Complications are just like any routine diagnostic endoscopic procedure:
  - Perforation
  - Bleeding
  - Need for surgery
- **Therapeutic procedures:**
  - Biliary drainage :15-30%
  - Cystogastrostomy: 10-15%
  - Gastroenterostomies: 12-20%

# Case discussion 1

- 65 year old lady
  - Recurrent episodes of abdominal pain since 6 weeks.
  - Epigastric, lasts 2-3 hours, non colicky, sometimes intense pain.
  - No radiation to back.